

VOLVO

Service Manual

Fault tracing

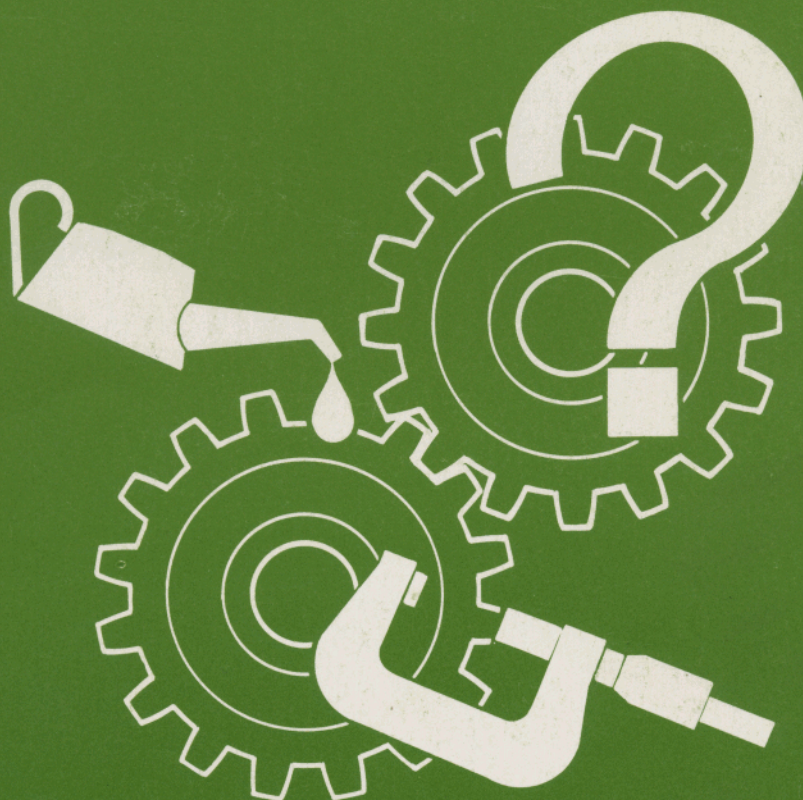
Repairs

Maintenance

Section 6 (60, 61, 64, 65)

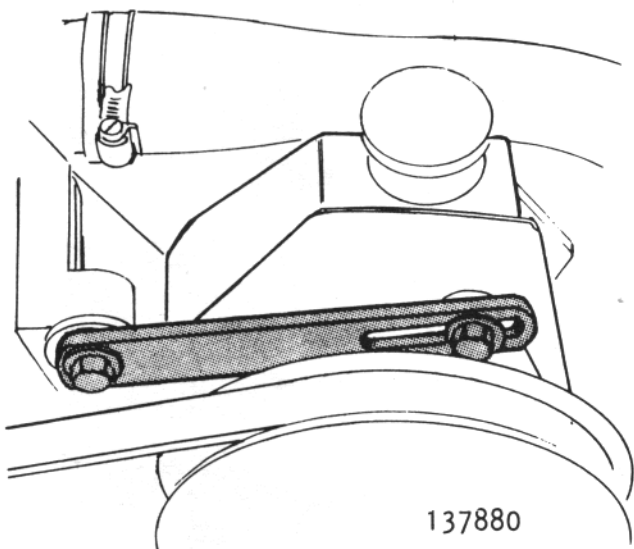
**Suspension
&
Steering**

**740/760
1983—**



Power Steering Pump Mounting Bracket D24T 760 GLE

NEW MOUNTING BRACKET FOR POWER STEERING PUMP ON D24T



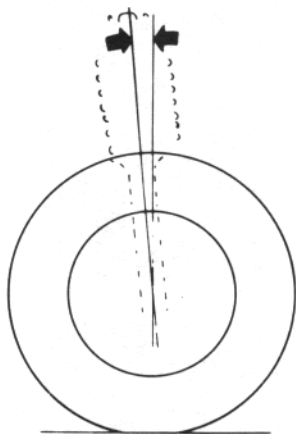
To increase the adjustment range of the power steering pump, a new mounting bracket was introduced in production at the end of August 1983.

The part number for the new bracket is 1328498-9.

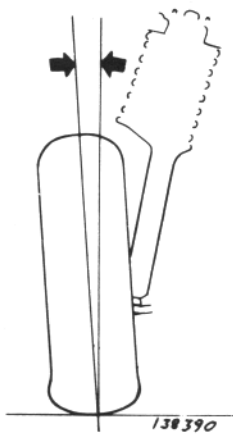
The new mounting bracket is 20 mm longer than the old one, and can be fitted to earlier D24T models.

Wheel Alignment 740-760

Wheel alignment specifications



Caster



Camber

Please note that the Caster and Camber data in the Specifications Service Manual should be as follows:

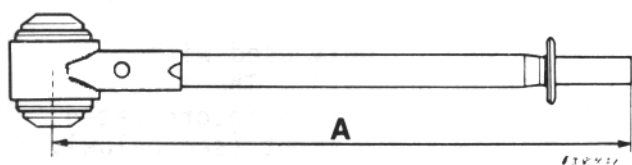
Caster	+4.5 - +5.5
Camber	-0.2 - +0.8

NOTE: Maximum variation between right and left-hand sides = 0.7 .

Caster can be adjusted by installing a new control arm strut. The shorter strut P/N 1387066-2 reduces Caster by 0.8 .

Length (A):

Standard	(1359899-0)	390.5mm
Short	(1387066-2)	385.0mm
Long	(1387067-0)	396.0mm



All new struts are 5.5mm longer than previous versions. The struts provide a larger Caster angle which means that it is easier to return the steering wheel to the straight ahead position after turning a corner.

New standard strut P/N 1359899-0 was brought into production from week 50, 1985.

Control Arm Strut Bushing 740-760

A new-style control arm strut and new, improved strut front bushings were brought into production during December 1985.

The new-style control arm strut is 5.5mm (7/32 in.) longer than previous versions, which gives a larger caster angle than before.

NOTE: For more information on control arm struts, refer to SB 60-2.

The new strut front bushings can be installed in earlier vehicles but must be replaced in pairs and on both sides of the vehicle. New bushing washers are also available.

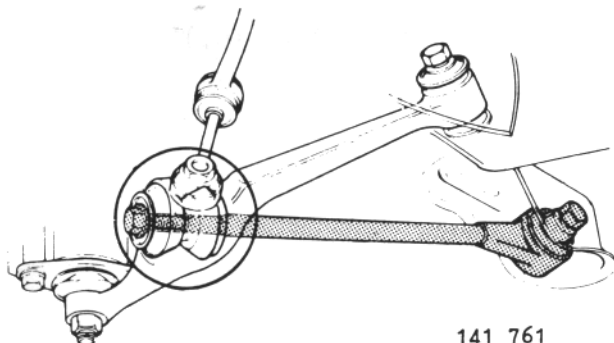
REQUIRED PARTS:	Description	Part No.	Quantity
	Bushing	1359599-6	4
	Washer (front)	1359606-9	2
	Washer (rear)	1359607-7	2 (only for use with old-style strut).

Control arm strut front bushings, replacing

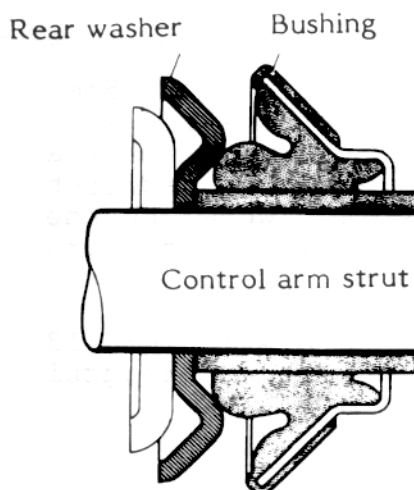
Refer to TP 30801/1, page 8 for procedures. Only modified steps are described below:

Perform C1-C3...
Do not perform C4-C5 unless the strut rear bushing also requires replacement.

Clean appropriate sections of control arm and strut.

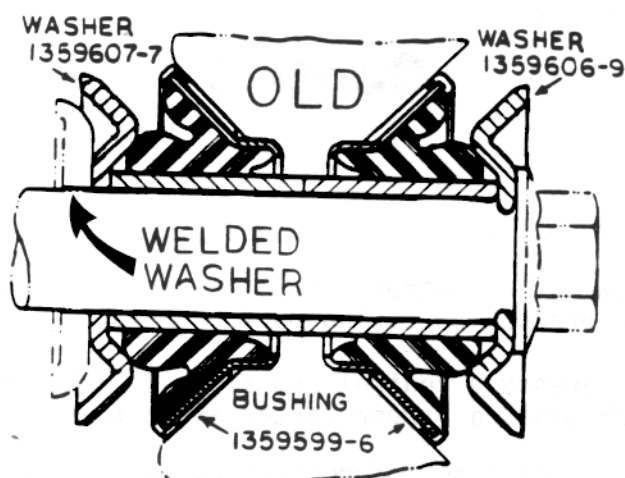
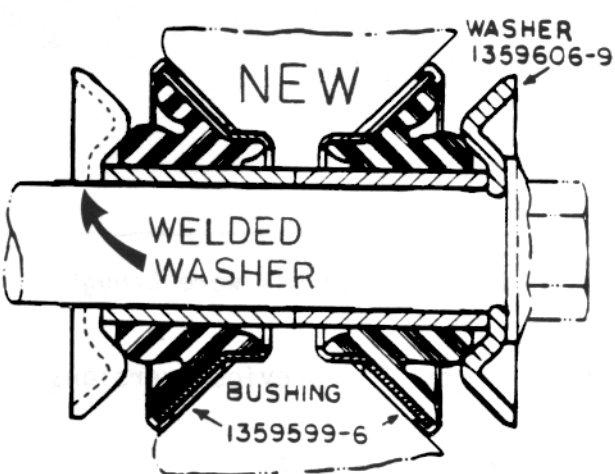


C6



Install rear washer and bushing on control arm strut.

NOTE: Rear washer is **only** used with old-style strut (see figures). The function of the rear washer is incorporated in the new-style strut (see below).



A) New-style control arm strut

B) Old-style control arm strut

Note different shape of welded washers on struts.

C7

Install control arm strut

First place strut in control arm (without bolt). Then, place in rear mount.

NOTE: Do not tighten in rear mount yet.

Install front bushing and washer.

Tighten bolt to 95Nm (70 ft.lb.)

Perform C8-C10...

