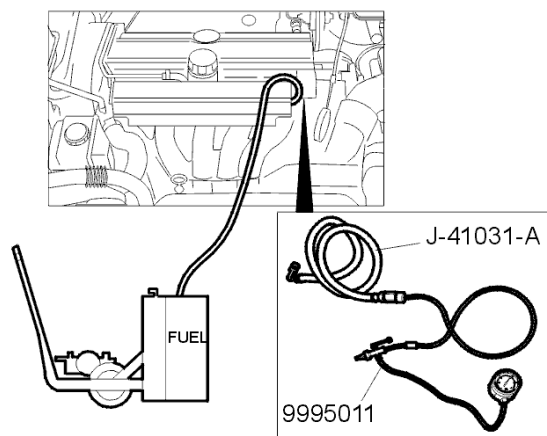


Fuel filter replacement, AWD (all wheel drive)

Preparations for draining the fuel system

Release the fuel pressure

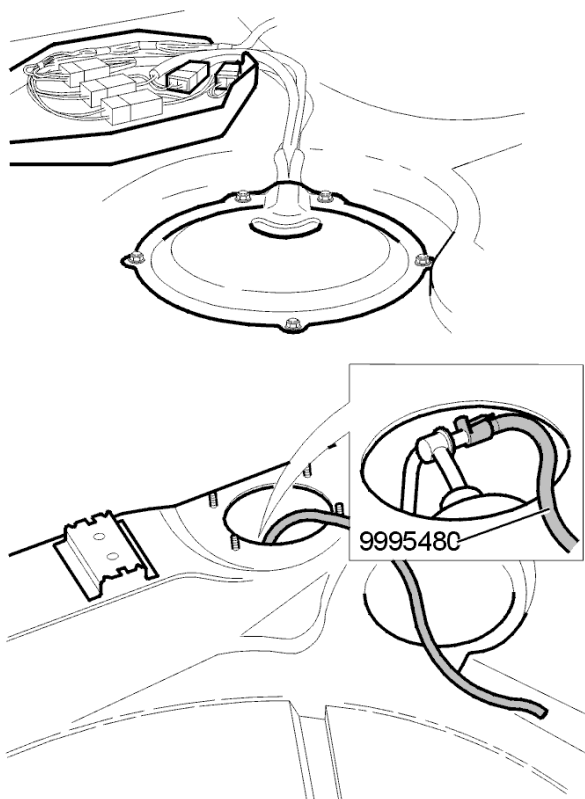
Remove the cover over the throttle control roller.
Unscrew the valve cap on the fuel distribution pipe.
Connect up the fuel discharge unit's adapter hose J-41031-A and drain the fuel into the pump trolley.
Start the fuel discharge pump.



Remove access covers in the cargo compartment

Connect the venting hose

Remove the access covers in the cargo compartment.
Undo the screws and pull the panel aside.
Remove the plate with connectors.
Use a screwdriver. Put the plate aside without unplugging the connectors.
Unscrew the nuts and open both access covers.

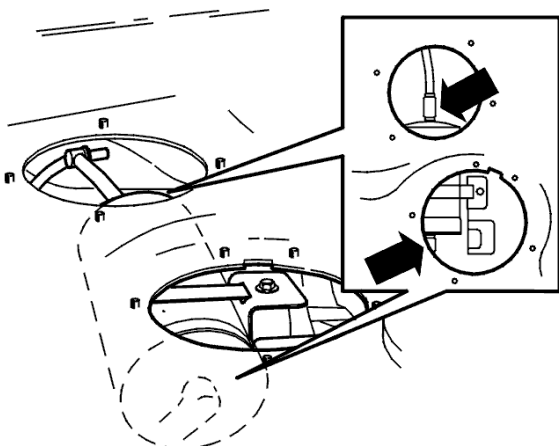


Unscrew the valve cap on the fuel line.
Connect the venting hose [999 5480-2](#).

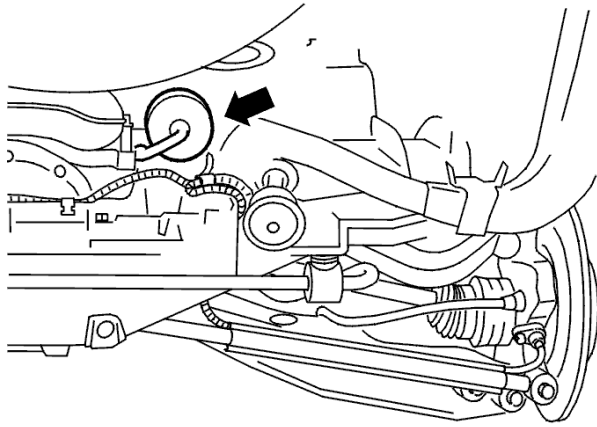
Allow the fuel suction unit to evacuate the fuel from the filter and fuel line. Then detach the filter holder.

Remove:

- The fuel line connections on the fuel filter. Pull the connection sleeve slightly to free the fuel line.
- The fuel filter screw. open the clamp but do not remove the screw. It should be possible to push the filter out of the holder. Leave the filter in the holder as the filter is changed from underneath.



Change the fuel filter



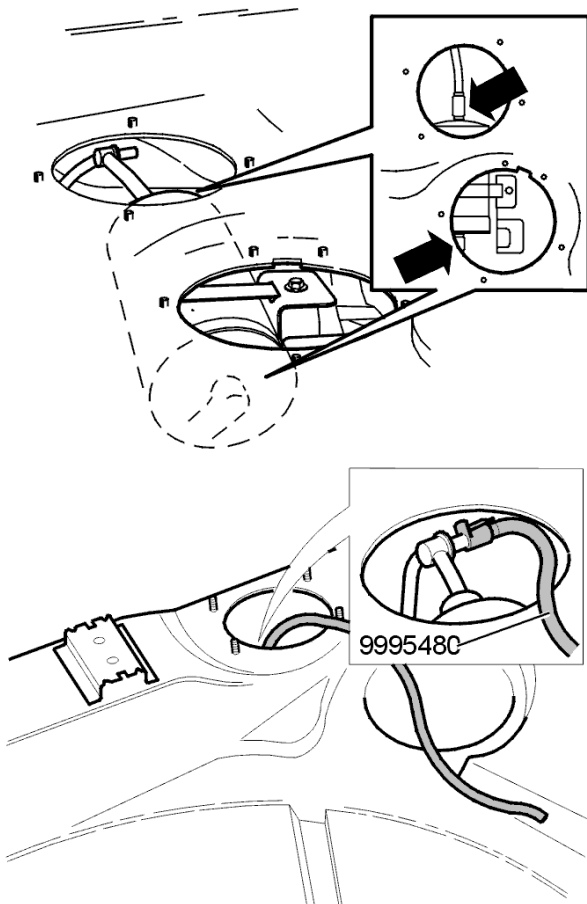
Raise the car:

- Raise the car on a lift and remove the fuel filter.
- Place a new fuel filter in the holder.
- Lower the car.

Connect the fuel lines

Fit:

- The fuel filter correctly and tighten the holder's screw.
- The fuel lines. Press the fuel line connections in place and check that they are properly secured by pulling the fuel line slightly in a lengthwise direction.



Undo venting hose **999 5480-2** .

Screw the valve cap back in place.

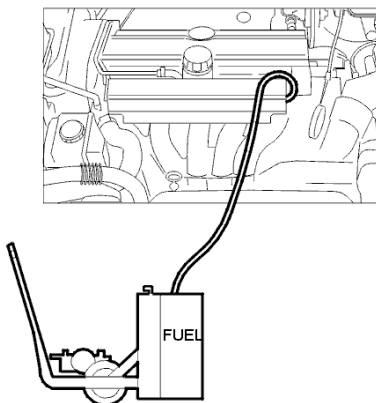
Refit the engine bay components.

Remove the fuel discharge unit

- Disconnect the fuel discharge unit from the fuel line.

Fit:

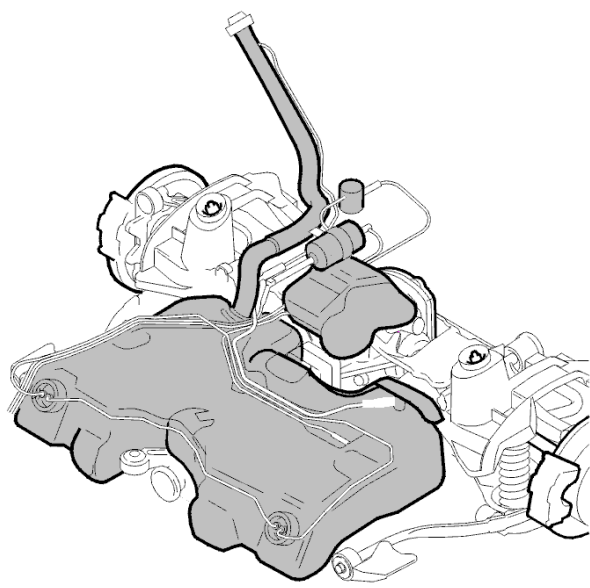
- The valve cap on the fuel distribution pipe.
- The cover over throttle control roller.



Check

Start the engine to check for leakage:

Start the engine and check that no fuel leaks are present. Rev up the engine to make sure that no air is sucked into the fuel system and so give rise to malfunctioning. Refit the access covers in the cargo compartment.



Position the cabling in the rubber grommet so that the yellow tape marking is on the inside.
Position and secure the plate with connectors.
Restore the cargo compartment floor to its original condition.