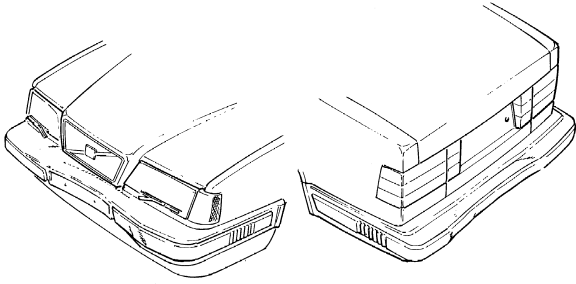


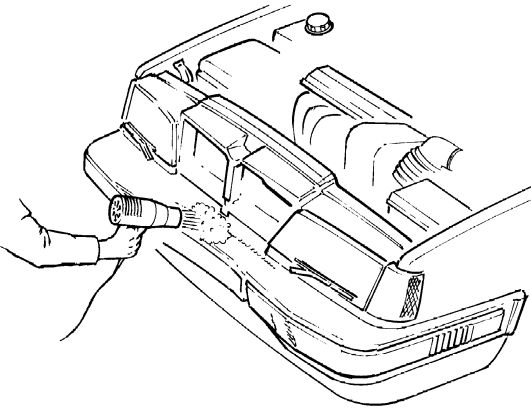
Simple repairs to the bumper cover



A small ridge may appear in the bumper cover following a low-speed collision. This can be repaired by heating the cover and pressing the material.

Remove number plate if necessary

Heat bumper cover with a hot-air gun to soften the damaged area



The bumper cover is sufficiently soft when light pressure with a wooden spatula produces a small mark in the plastic.

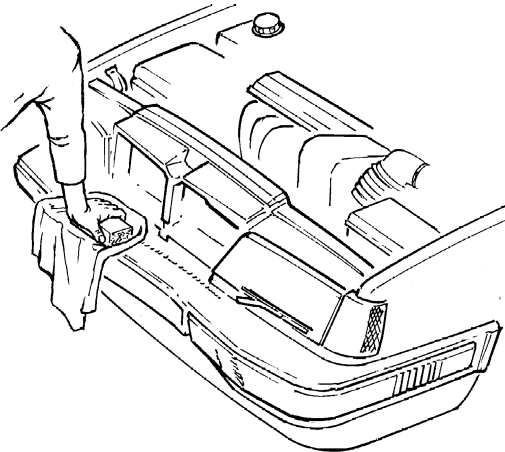
A suitable distance between the gun and bumper is approximately 12 cm. However, distance may vary depending on the type of gun. Start with a greater distance and reduce if required.

It may be difficult to heat large areas. Carry out the repair in a series of stages.

Caution! Paintwork will be damaged by excessive temperature. Work carefully and watch for surface changes which may indicate overheating.

Place a clean blanket over the heated area and press out the damage with a wooden block

Continue to press until bumper cover has cooled, approximately two minutes.



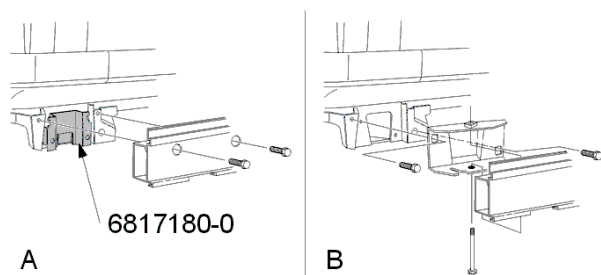
Repeat procedure until the damage has been completely repaired

Some areas of bumper may require repeated treatment.

Touch up paintwork if necessary

Modifying bumper rail

A new rear bumper rail and bodywork mounting has



been introduced into production. Only the new version of the bumper rail will be stocked as a replacement part once stocks of the old version have been exhausted. The new rail and bodywork mounting can be modified for older cars.

This Service Bulletin describes:

Section A Modifying new bumper rail for the older bodywork mounting
 Section B Modifying older bumper rail for new bodywork mounting

Note! The shaded component in illustration A is available as a replacement part.

Section A Modifying new bumper rail for the older bodywork mounting

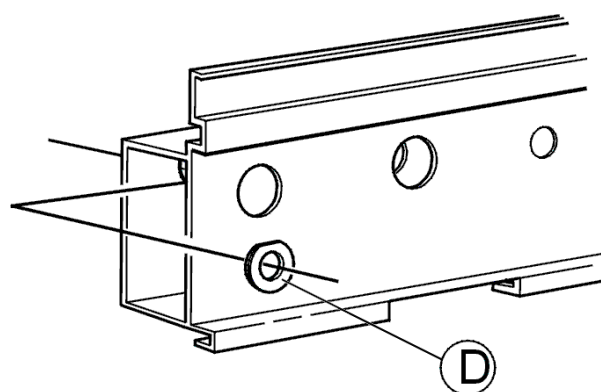
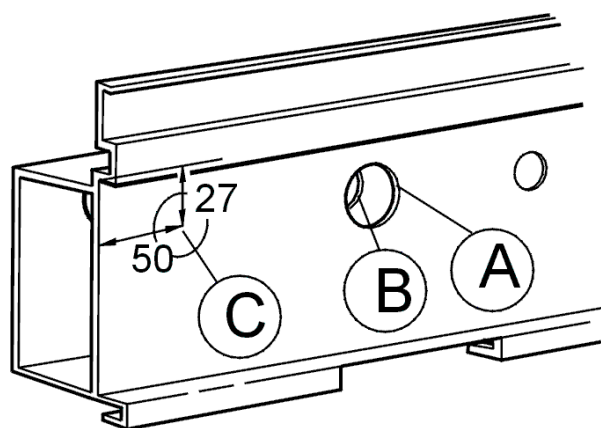
The illustrations show the left rear bumper mounting before modification. The right mounting is inverted.

Modifying new bumper rail for older bodywork mounting

Drill:

- hole (A) with a 35 mm hole saw in punch mark.
- hole (B) with a 21 mm hole saw in punch mark.
- hole (C) according to measurement in illustration with a 35 mm hole saw.

(If there is no punch mark, make one before drilling).



Install:

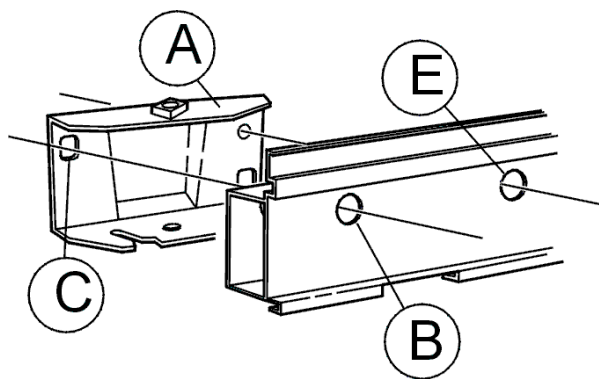
- washer (D) (P/N 9133551-3) in hole in rail nearest the bodywork. Secure washer with tape inside the rail.
- rail to bumper cover.
- bumper to bodywork with screws.

The illustration shows the left rear bumper mounting. The right is inverted.

Modifying old bumper rail for new bodywork mounting

Mark and in drill holes in the new bracket:

Position bracket (A) (left P/N 9133855-8 and right 9133856-6) on the bumper rail and align bumper rail mounting hole (B) with holes (C) in the bracket.

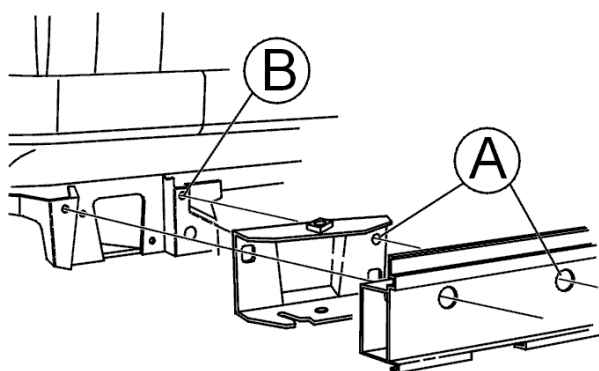


Mark up bracket using a punch in the middle of the hole in the rail (E). Drill a new hole (D) in the bracket using a 21mm hole saw.

The illustration shows the left rear bumper mounting. The right is inverted.

Installing the bracket and rail onto the bodywork

Install bumper rail and bracket with screws in the outside left and right mountings on the car. Try to center the holes in the rail and bracket.



Drill holes in the bodywork spacer

Use holes (A) in the bumper rail and bracket as a template and drill an 11 mm hole (B) in the bodywork spacer.

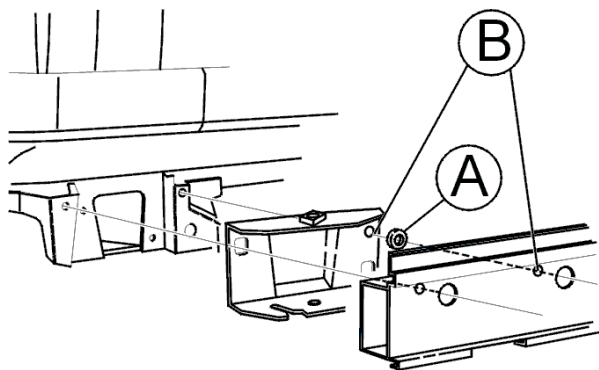
The illustration shows the left rear bumper mounting. The right is inverted.

Treat with rustproofing agent

Remove bumper rail and bracket. Treat holes with rustproofing agent (P/N 1381063-5).

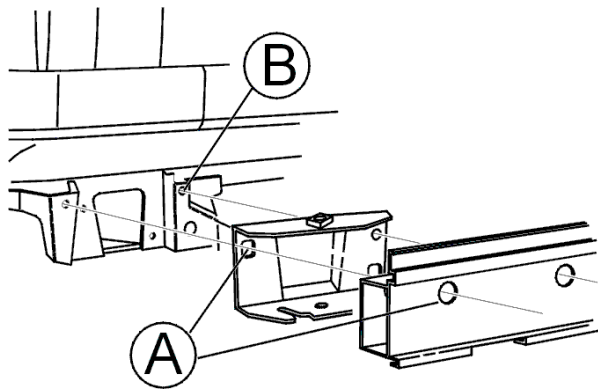
Assembling bumper rail with brackets

Position bracket on rail and locate washer (A) (P/N 960145-1) on hole (B) between the rail and bracket. Secure the washer and bracket to the rail with tape. The illustration shows the left rear bumper mounting. The right is inverted.



Securing bumper to car

- Secure both ends of the bumper to mounting points (A) with screws.
- Adjust bumper. File up holes (B) for the screws if necessary.



- Remove bumper and rust-proof the filed mounting.
- Secure bumper to bodywork. Use nut (P/N 955783-6) in mounting points (B). The mounting points have no weld nut.
- Treat nut with rustproofing agent 1381063-5.

Hint: The illustration shows the left rear bumper mounting. The right is inverted.

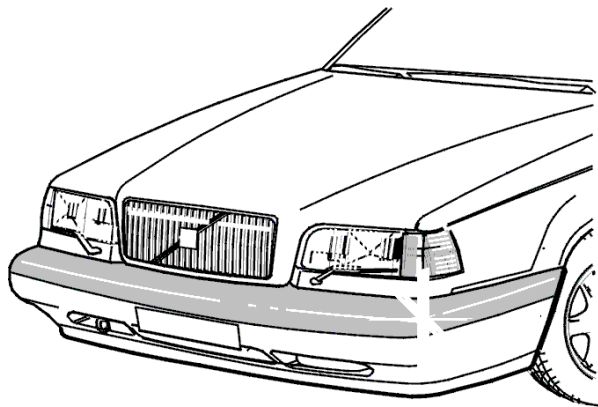
Bumpers

Note! Certain 850 models got new front and rear bumpers in 1994.

Other models retained the current bumper.

Front bumper

The bumper cover is larger than it was and consists of an upper and lower section.



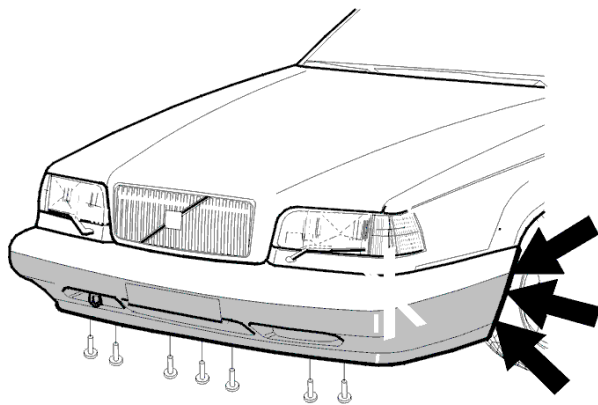
To replace the bumper

Remove the pop rivets in the wheel housing (3 on each side).

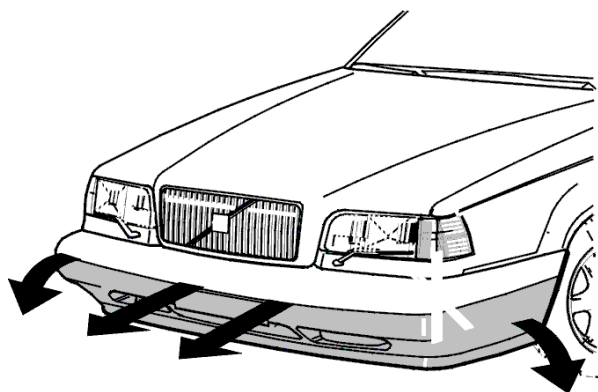
Note! Aluminum rivets can be drilled out. Plastic rivets can be removed with a knife and hammer.

Remove two license plate holder screws.

Remove the lower bumper cover retaining screws from below (7 screws).



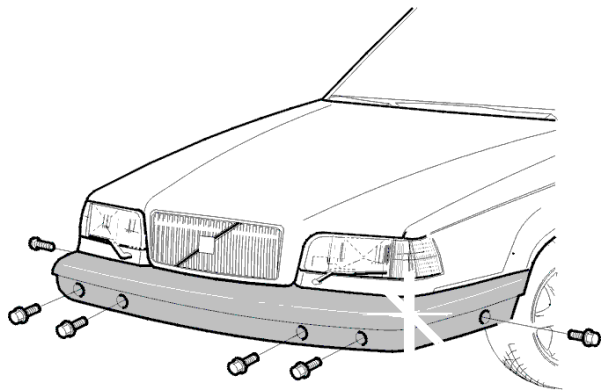
Pull out the lower section of the bumper cover. Pull the top as arrowed.



Remove 6 screws as illustrated.

Remove bumper and upper section of bumper cover.

Remove bumper cover from bumper (8 screws).

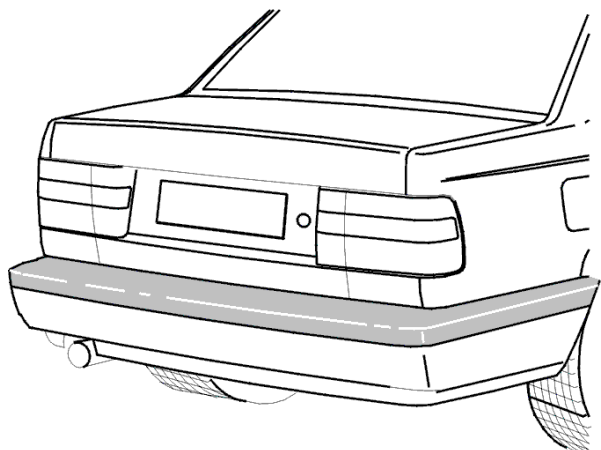


Install:

In reverse order.

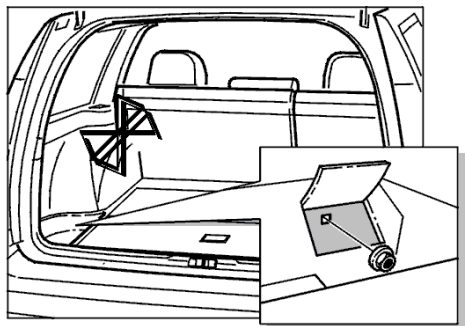
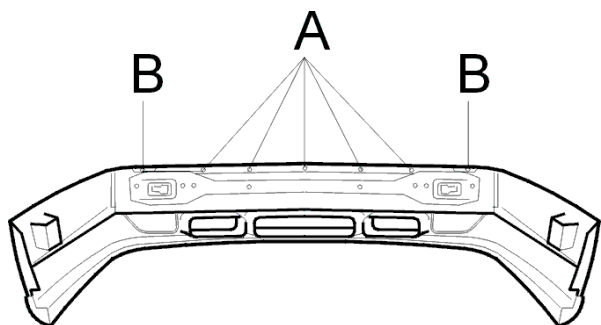
Rear bumper, 4-door

The bumper cover is larger and consists of a single unit.



Rear bumper, 5-door

The bumper is larger and consists of a single unit.



To replace the bumper

(The method is the same for 4-door and 5-door models.)

Raise the car.

Remove tail pipe.

Remove the pop rivets in the wheel housing (3 on each side).

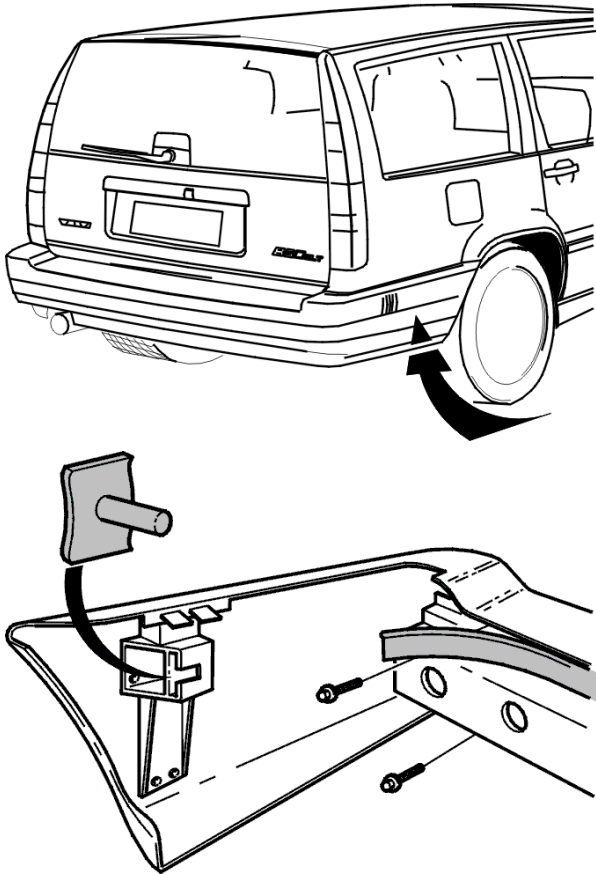
Note! Aluminum rivets can be drilled out. Plastic rivets can be removed with a knife and hammer. (See procedure for front bumper.)

Open the trunk lid or tailgate.

Fold up the fabric panel on the left-hand side of 4-door models. Remove the left floor hatch and lift up a corner of the soundproofing on 5-door models.

Remove nut (M6) holding the cover strip on the left-hand side.

Remove nut holding the cover strip on the right-hand side.



The nut is on the outside under the car.
 Remove the two screws by the mounting pieces.
 Lift off bumper.

Remove the cover strip from the rail (8 torx screws on top, 5 torx screws on the underside).
 Remove both side mounting plates.
 Remove rubber strip (dust cover) secured with double-sided adhesive tape.

Install

Position the shock absorber in the bumper cover.
 Position the bumper rail above the shock absorber.
 Screw cover strip into place on the bumper rail.
 Install side mounting plates on left and right-hand sides.
 Install a rubber strip (dust cover).
 Align mounting brackets on bodywork.
 Try a bumper on the car.
 Remove bumper and tighten mounting brackets.
 Install bumper.
 Screw side panels into place first, then tighten onto mounting brackets.
 Install tailgate (5-door), fold back fabric panel (4-door).
 Pop rivet fender liner to bumper cover.
 Install tail pipe.

Adjusting warped bumper covers

The bumper covers can warp in strong sunlight. Warped front bumper covers can be adjusted with the mounting. Warped rear bumper covers on 5-door cars should be replaced. A bumper cover that does not warp has been introduced on new cars. Corrective action according to this Service Bulletin may be required on the cars in the following table.

Front	Rear	Number of doors	Up to and including chassis number
X*		4	73000
X*		5	14000

* New type of screw (5 at the front) P/N 979 683-0.

** New type of screw (4 at the rear) P/N 979 922-2.

Adjusting front bumper cover

Remove:

- bumper from bodywork.
- upper cover mounting screws (A, B) and discard.

Install:

- new cover screws (A).

Note! Do not install the two outer screws (B).

- bumper onto bodywork

Check that the bumper cover is not warped and replace if it is.

Replacing rear bumper cover

- Remove bumper from car.
- Fold down rubber strip on the inside of the bumper.
- Remove screws (A) holding the upper section of the bumper cover (every other screw, as illustrated).
- Remove the old cover and install a new one with new screws P/N 979 922-2.

See also [Bumpers](#) .

